

Welcome Home To



**MADDOX
LANDING**



 **UNIONMAIN
HOMES**

HOSCHTON, GA

EST.  2022

MADDOX LANDING



MADDOX LANDING

Small-Town Life in a Fast Growing Community



If you're looking for a wonderful home in an exciting location, look no further than Maddox Landing in Hoschton, Georgia. This one-of-a-kind, master-planned community gives you all the privacy you desire, combined with a real sense of belonging. Plus, the Jackson County School District has a well deserved reputation for excellence.

Nestled in the heart of Hoschton, Maddox Landing offers an unparalleled living experience with expansive lots, including spacious cul-de-sac options that promise both privacy and serenity. This thoughtfully planned community introduces a curated selection of modern floorplans with interior and exterior style options to make it your own.

One of the fastest-growing cities in the Atlanta area, Hoschton presents residents with the best of both worlds: a small-town feel with all the excitement of downtown Atlanta conveniently located just down the highway.

A CONVENIENT PLACE TO LIVE

You'll appreciate the relaxed atmosphere and rural charm of Hoschton. The town offers unique shopping, a large winery, fine dining, annual festivals and more. It's only minutes from the Mall of Georgia and Lake Lanier, and offers easy access to I-85 and GA-53.

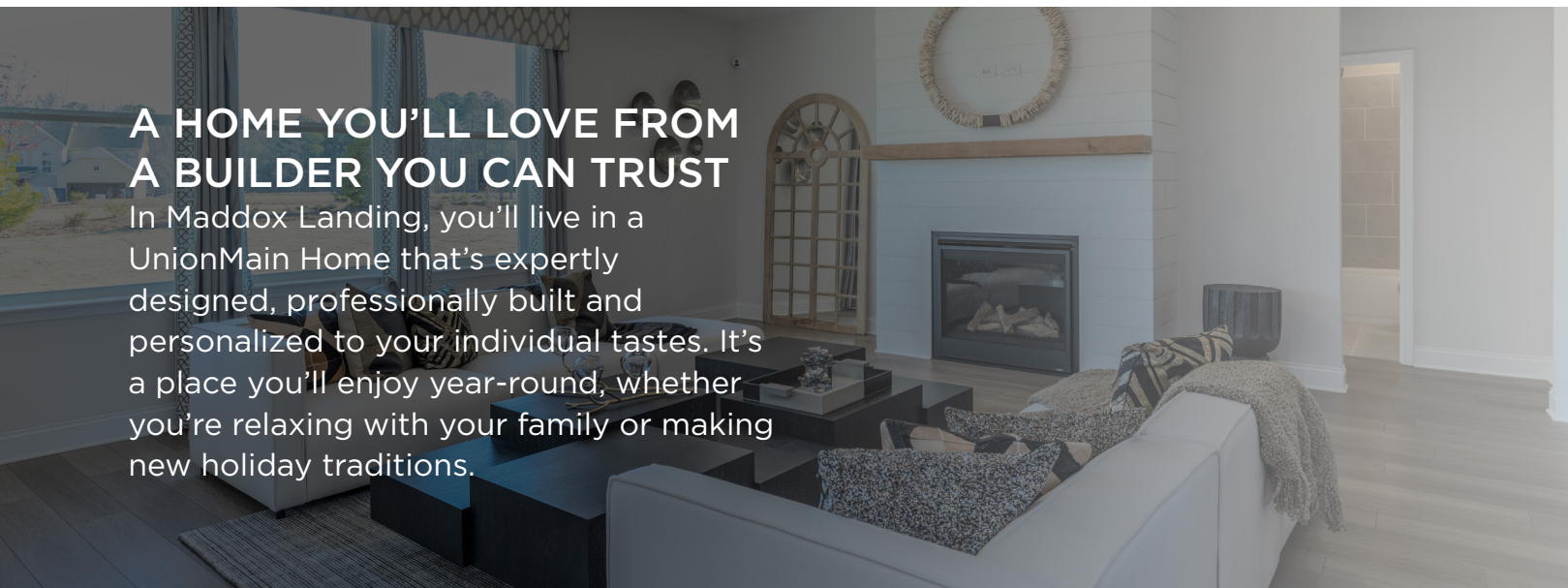


A FOCUS ON EDUCATION

As a Maddox Landing homeowner, you'll join a community where education is a high priority. The acclaimed Jackson County School District is known for helping students reach their fullest potential through innovative academic programs and experiences. The district also maintains a championship athletic tradition, as well as impressive fine arts opportunities. As the district continues to grow, these lofty standards will remain.

A HOME YOU'LL LOVE FROM A BUILDER YOU CAN TRUST

In Maddox Landing, you'll live in a UnionMain Home that's expertly designed, professionally built and personalized to your individual tastes. It's a place you'll enjoy year-round, whether you're relaxing with your family or making new holiday traditions.



EST.  2022

MADDOX LANDING



With spacious, modern floor plans, Maddox Landing has a home for every taste and lifestyle. Our highly personalized homebuying process allows each family to customize their ideal space with upgrade options that meet both wants and needs.

SELECT COLLECTION

1,881-3,266 SqFt

4-5 Beds

2-4.5 Baths

2 Car Garage

Home Office/Study in Select Home Designs

Game Room/Loft in Select Home Designs



SCHOOL DISTRICT

West Jackson Elementary School (K-5)

West Jackson Middle School (6-8)

Jackson County High School (9-12)

EMERSON

Plan # 4130

1,881 Base SqFt



4-5 Bed



2-3 Bath



1-3 Story



2-3 Garage

Available Upgrade Options:

Uncovered/Covered/Screened Outdoor Living, French Doors to Outdoor, Additional Windows at Dining/Primary Suite, Corner Fireplace, Primary Bathtub, Stairs to Basement/Second Floor, Half Car Garage/3 Car Garage, Optional Second Floor, Optional Second Floor w/ Bedroom 5

About the Emerson:

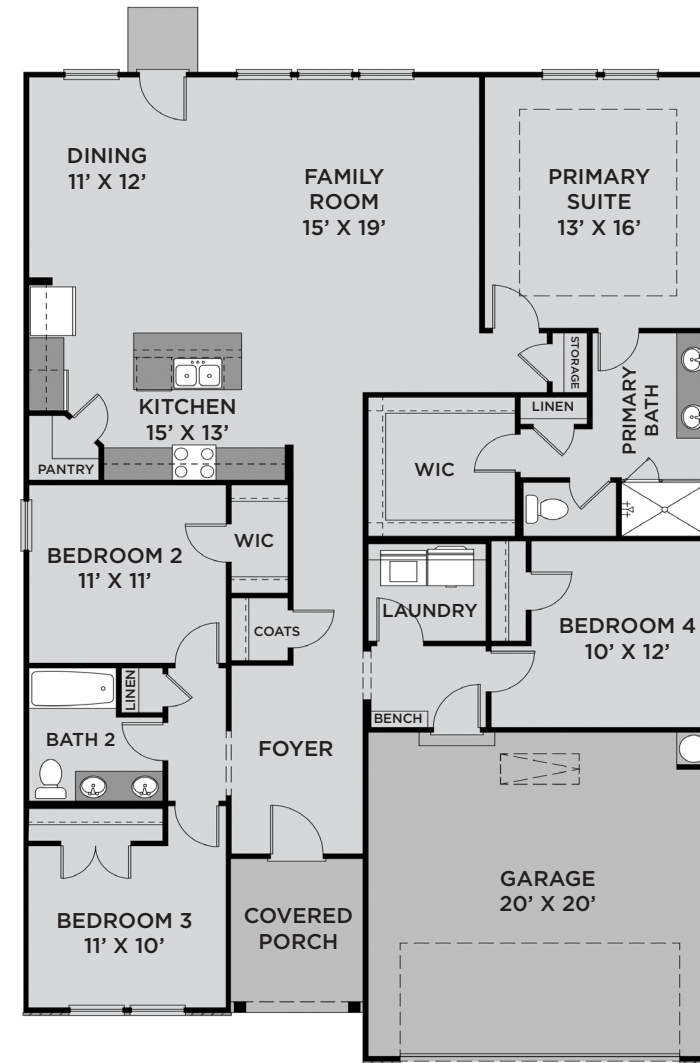
The Emerson is a charming home with versatile spaces to craft the perfect home just for your family. The inviting covered porch opens into a foyer that offers access to 3 secondary bedrooms, a full bathroom and the utility and mudroom – before opening into a large open living space. This living area holds a spacious family room, a lovely dining area, and a lavish, modern kitchen. The primary suite features a spacious bedroom, beautiful ensuite bathroom complete with a dual sink vanity, private commode and spacious walk-in closet. Additional highlights include linen and coat closets throughout the home for all the storage you need. The Emerson features optional floors like an unfinished basement and two second story layouts to fashion your dream home to fit your family's needs.



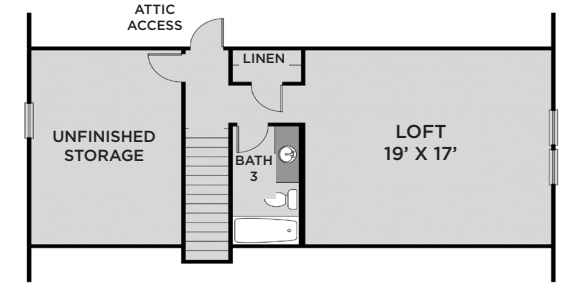
EMERSON ELEVATION A



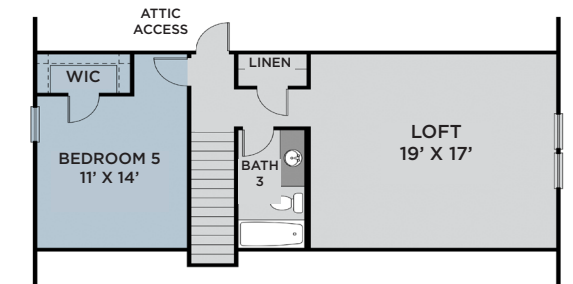
EMERSON ELEVATION B



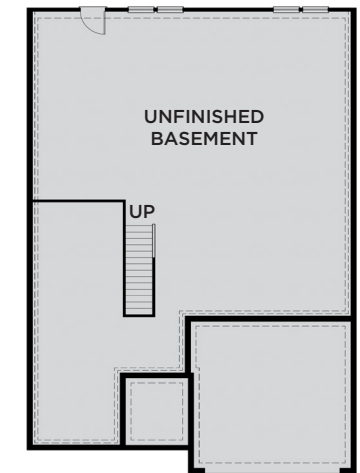
FIRST FLOOR



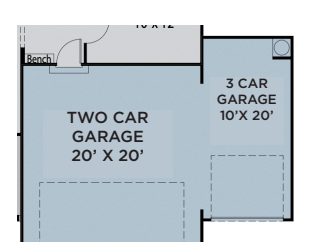
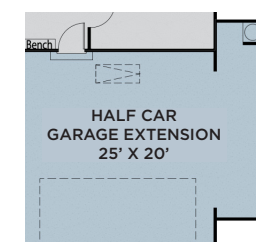
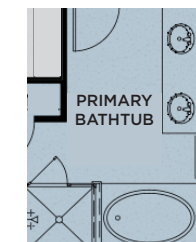
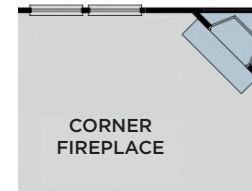
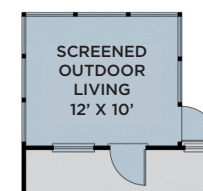
OPTIONAL SECOND FLOOR



OPTIONAL SECOND FLOOR W/
BED 5



OPTIONAL BASEMENT



Prices, plans, dimensions, features, specifications, materials or availability of homes or communities are subject to change without notice or obligations. Illustrations are artist's depictions only and may differ from completed improvements. Copyright 2024 UnionMain Homes. All Rights Reserved.

ATKINSON

Plan # 5210

2,228 Base SqFt



4 Bed



2.5 Bath



2 Story



2 Garage

Available Upgrade Options:

Uncovered/Covered/Screened Outdoor Living, French Doors to Outdoor, Gourmet Kitchen, Open Railing, Additional Windows at Flex, Additional Windows at Family Room, Center Fireplace, Study at Flex, Wall at Bath 2, Primary Bath Free-Standing Tub

About the Atkinson:

The Atkinson provides ample living and entertaining space, ideal for hosting family and friends while creating life-long memories. The inviting covered porch opens into a foyer that offers access to a versatile flex space - perfect for an office, workout space, or playroom - before opening into a large open living space. This living area holds a spacious family room, a lovely dining room, and a gourmet kitchen. The powder room is conveniently located off of the kitchen and leads to a small mudroom with access to the full garage. The primary suite, three guest bedrooms, and laundry room can all be found on the second floor. Each guest bedroom has its own walk-in closet and access to a shared full bathroom. The primary suite features its own double vanity bathroom with a separate shower and bathtub in addition to a sizable walk-in closet.



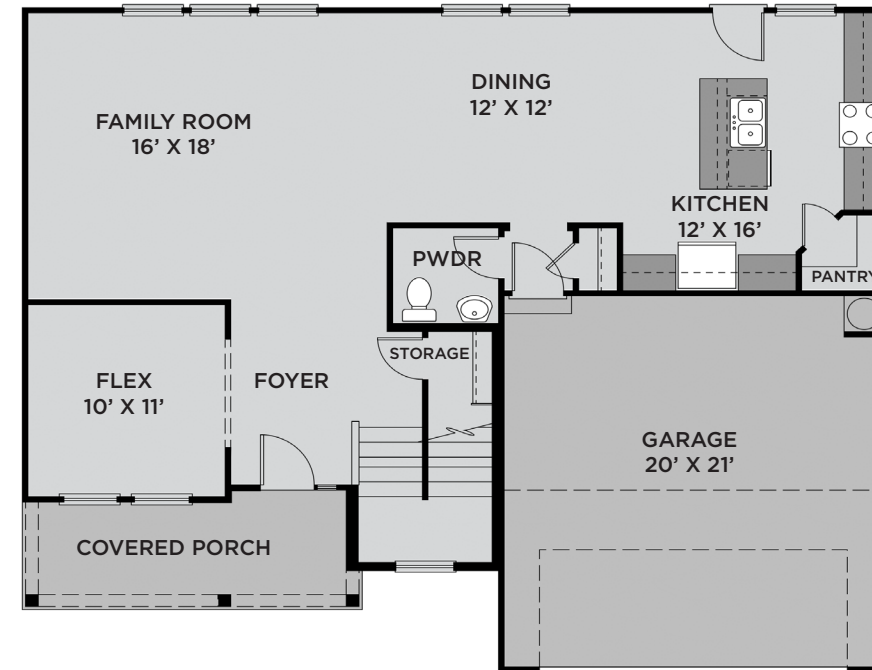
ATKINSON ELEVATION A



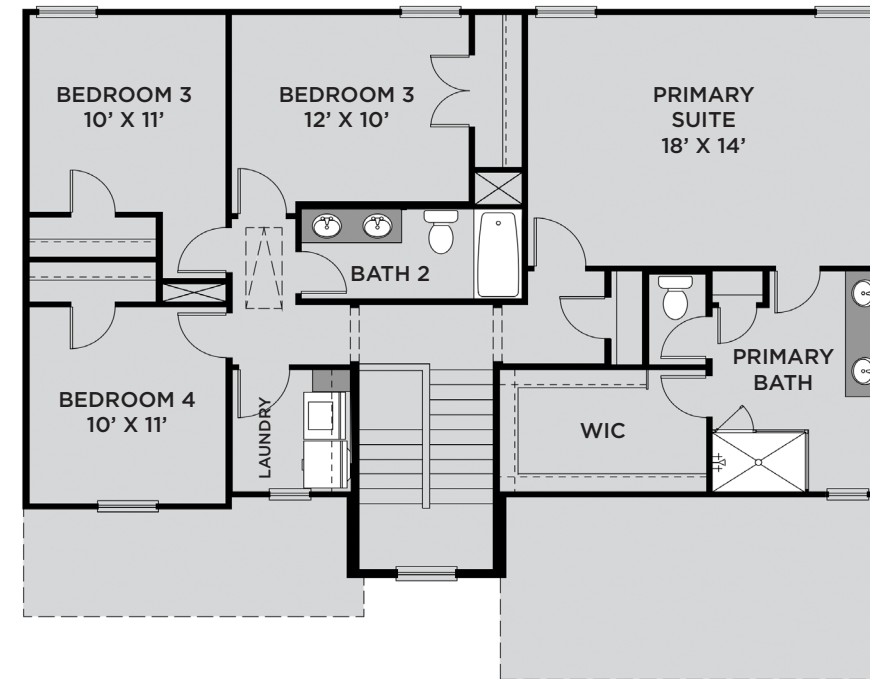
ATKINSON ELEVATION B



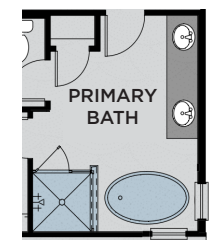
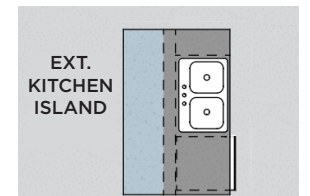
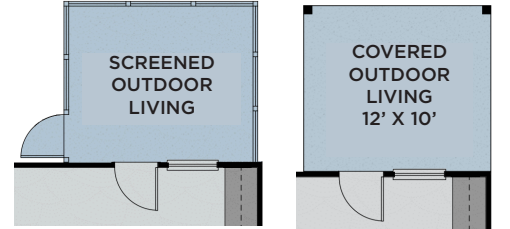
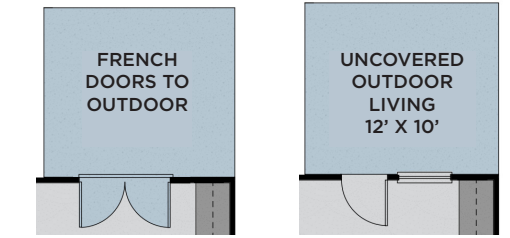
ATKINSON ELEVATION C



FIRST FLOOR



SECOND FLOOR



Primary Bath Free-Standing Tub

Prices, plans, dimensions, features, specifications, materials or availability of homes or communities are subject to change without notice or obligations. Illustrations are artist's depictions only and may differ from completed improvements. Copyright 2024 UnionMain Homes. All Rights Reserved.

BALDWIN

Plan # 5220

2,558 Base SqFt



4 Bed



2.5 Bath



2 Story



2 Garage

Available Upgrade Options:

Uncovered/Covered/Screened Outdoor Living, French Doors to Outdoor, Additional Family Room/Primary Suite/Flex Windows, Center Fireplace, Study at Flex, Gourmet Kitchen, Extended Kitchen Island, Powder Bath Cabinet, Open Railings, Cabinets/Sink at Laundry, Primary Bathtub, Wall in Bath 2

About the Baldwin:

The Baldwin is an endearing two-story floorplan that boasts four bedrooms with plenty of impressive living and entertaining space. A welcoming covered porch enters to an inviting foyer, powder room and a versatile flex space – perfect for an office, workout space, or playroom. The foyer opens into a spacious family room that provides a direct line of sight to a lovely dining room and well-equipped kitchen. The kitchen provides plenty of counter and storage space, including a walk-in pantry and a center island with a double sink. The attached garage opens into a mud room with a built-in bench before providing a second entrance into the kitchen. Stairs lead up to a multi-functional loft space. Three secondary bedrooms and the full-size laundry room sit on one side of the loft space while the primary suite sits on the other. All secondary bedrooms have a walk-in closet and access to a full bathroom. The primary suite offers a sizable walk-in closet in addition to a separate shower and bathtub.



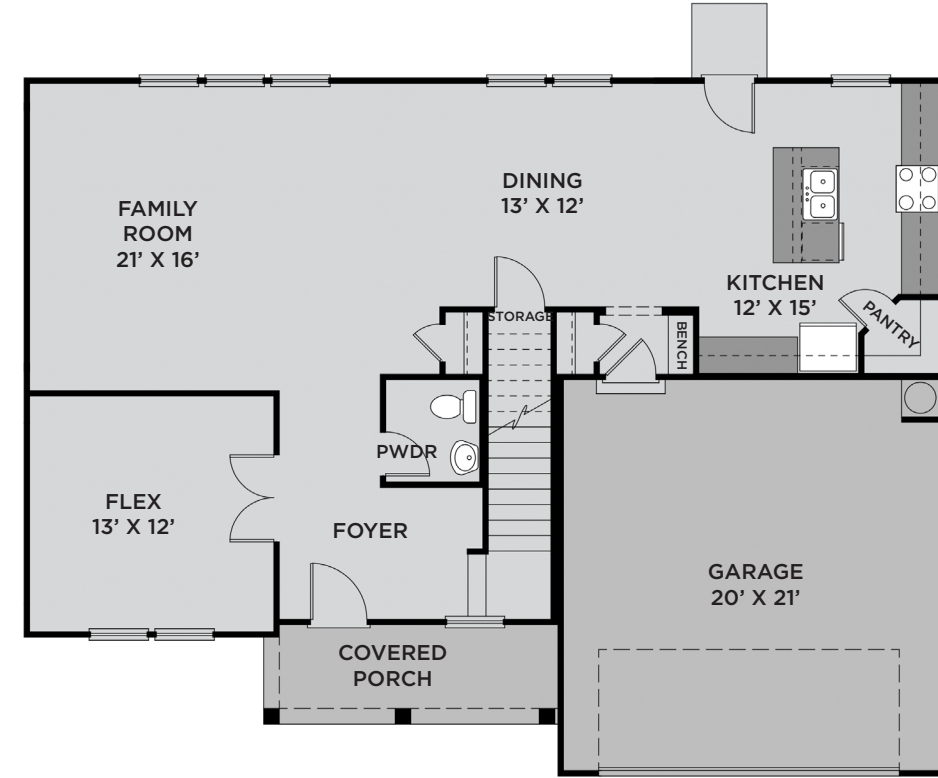
BALDWIN ELEVATION A



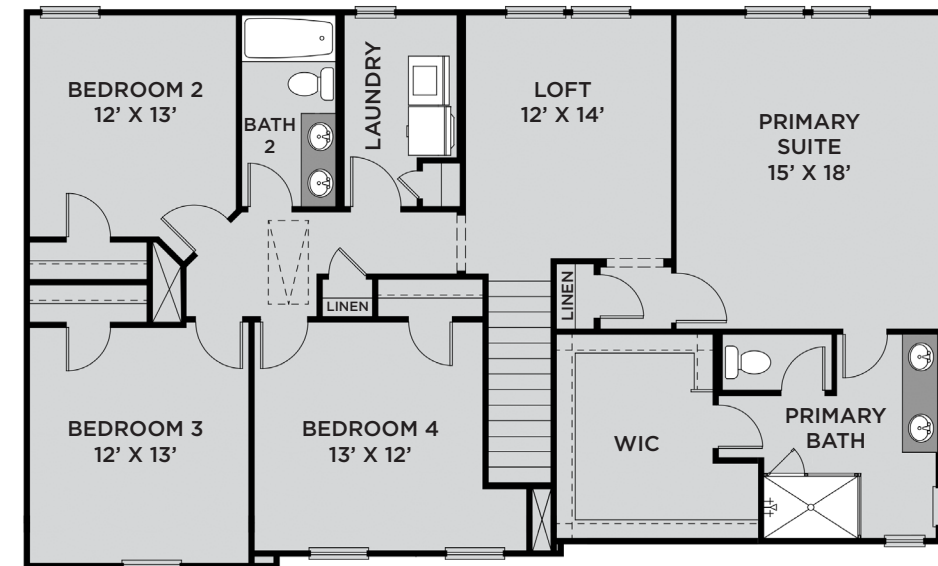
BALDWIN ELEVATION B



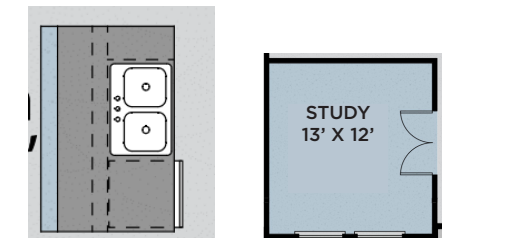
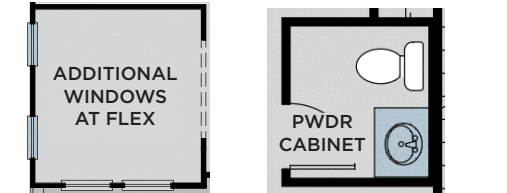
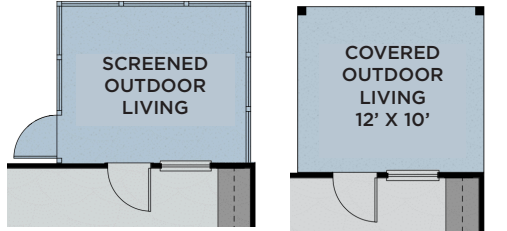
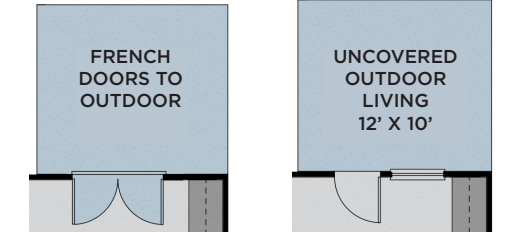
BALDWIN ELEVATION C



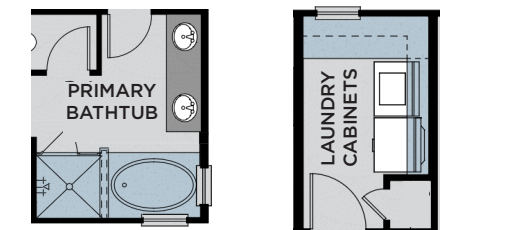
FIRST FLOOR



SECOND FLOOR



Extended Kitchen Island



Prices, plans, dimensions, features, specifications, materials or availability of homes or communities are subject to change without notice or obligations. Illustrations are artist's depictions only and may differ from completed improvements. Copyright 2024 UnionMain Homes. All Rights Reserved.

GLYNN

Plan # 5240

2,677 Base SqFt



4 Bed



3.5 Bath



1 Story



2 Garage

Available Upgrade Options:

Uncovered/Covered/Screened Outdoor Living, French Doors to Outdoor, Study at Flex, Additional Windows at Dining/Breakfast, Corner Fireplace, Extended Kitchen Island, Gourmet Kitchen, Powder Bath Cabinet, Laundry Cabinets/Sink, Primary Bathtub, Open Railings, Gameroom on Second Floor

About the Glynn:

The Glynn is an inviting two-story floorplan with ample living and entertaining space, perfect for hosting family and friends and creating life-long memories. The covered porch provides entry into a sizable foyer and beautiful dining room while also giving access to a versatile flex space – perfect for an office, workout space, or playroom – and a conveniently located powder room before opening into a spacious family room. This family room flows into a gourmet kitchen with a walk-in pantry and an open breakfast area with access to a serene covered patio. Behind the family room sits the primary suite with a large walk-in closet and full bathroom with a double vanity and separate bathtub and shower. The laundry room is conveniently located behind the primary suite and provides access to the garage and the family room. The stairs to the second floor provide a bird's eye view of the family room and leads to a guest suite with a walk-in closet and an attached full bathroom and two additional bedrooms, both with walk-in closets, that share a full bathroom.



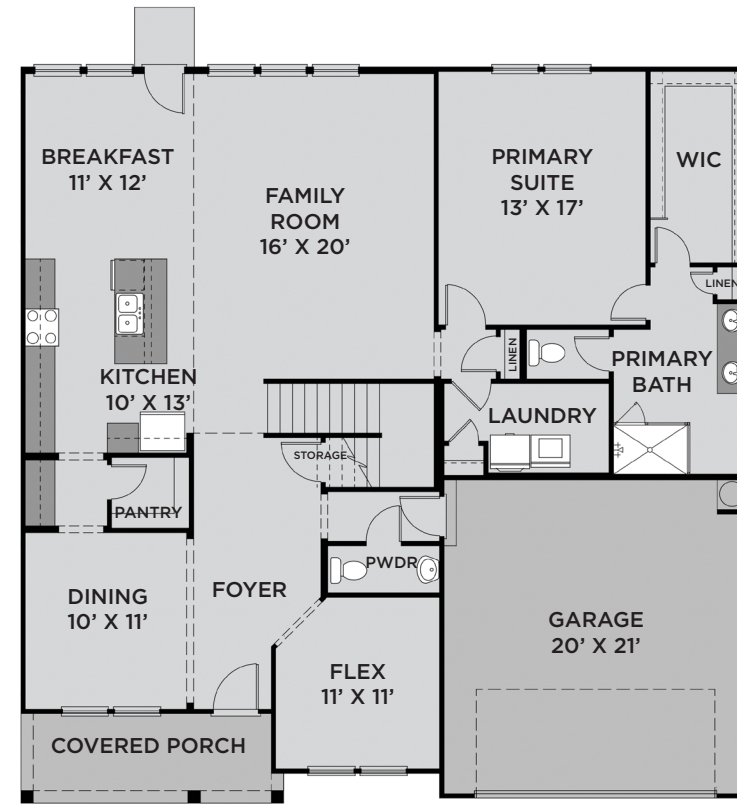
GLYNN ELEVATION A



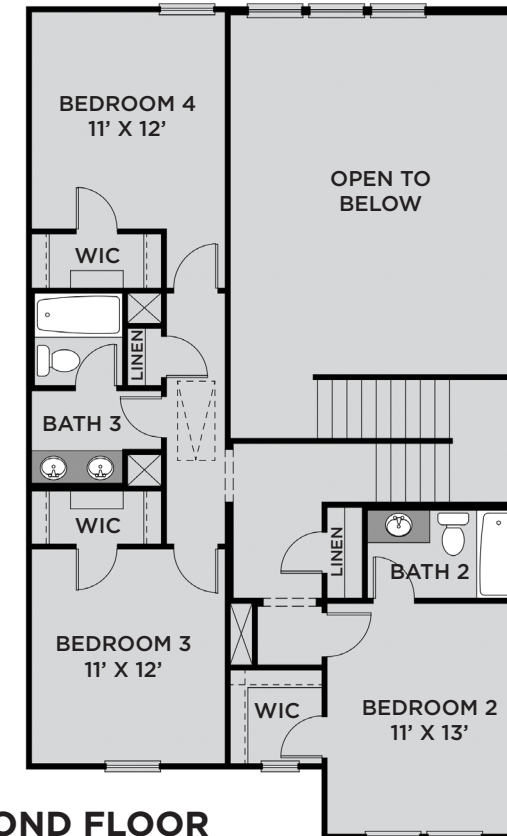
GLYNN ELEVATION B



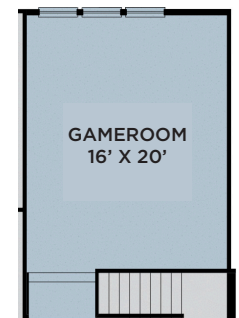
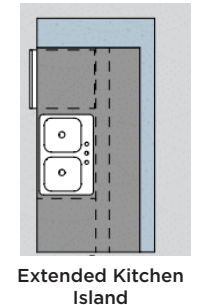
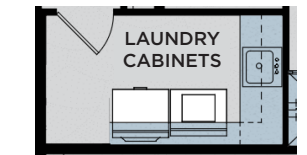
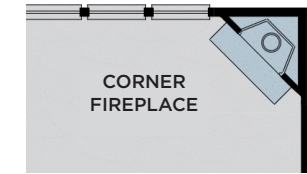
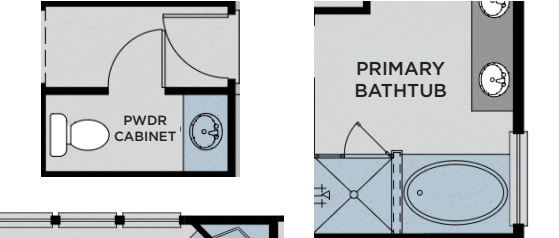
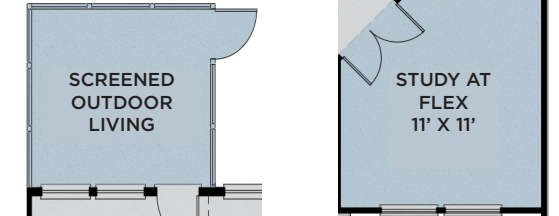
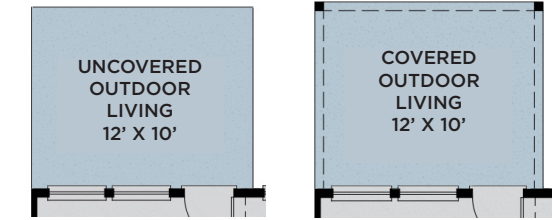
GLYNN ELEVATION C



FIRST FLOOR



SECOND FLOOR



Prices, plans, dimensions, features, specifications, materials or availability of homes or communities are subject to change without notice or obligations. Illustrations are artist's depictions only and may differ from completed improvements. Copyright 2024 UnionMain Homes. All Rights Reserved.

CHARLTON

Plan # 5230

2,760 Base SqFt



4-5 Bed



3-3.5 Bath



2-3 Story



2 Garage

Available Upgrade Options:

Uncovered/Covered/Screened Outdoor Living, French Doors to Outdoor, Additional Windows at Dining/Bed 4/ Flex, Center Fireplace, Study at Flex, Extended Kitchen Island, Gourmet Kitchen, Open Railings, Laundry Cabinets/Sink, Bed 5 in lieu of Loft, Primary Bathtub, Optional Third Floor Bonus Room w/ Powder Bath

About the Charlton:

The Charlton showcases a beautiful two-story floor plan, optimal for spacious living and entertaining. The welcoming covered porch opens into a beautiful foyer that offers access to a versatile flex space - perfect for an office, workout space, or playroom - and a two-car garage before leading into a sizable open living space. This spacious living area showcases a large family room and opens directly into a lovely dining room and kitchen. A guest bedroom with a full bath can be found conveniently located behind the living area. Upstairs is a multi-functional loft area and hallway access to the laundry room with storage space and two guest bedrooms, each with its own walk-in closet and shared access to a full bathroom. On the other side of the loft sits the primary suite with a full bathroom with double vanities and a separate shower and bathtub. This floor plan offers ample closet space with two walk-in closets attached to the master bathroom - no need to share your closet space in this house!



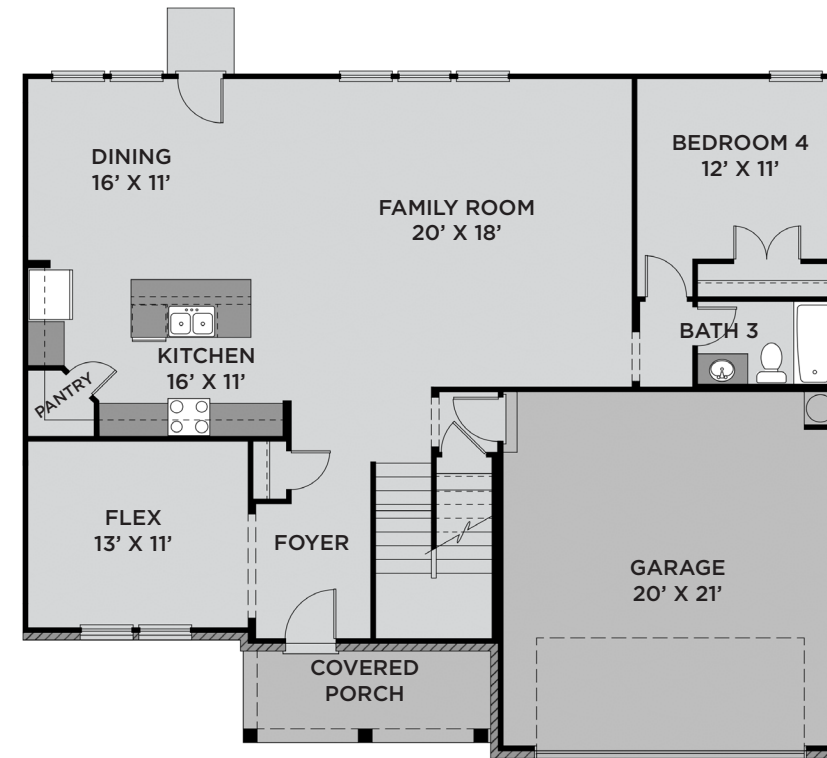
CHARLTON ELEVATION A



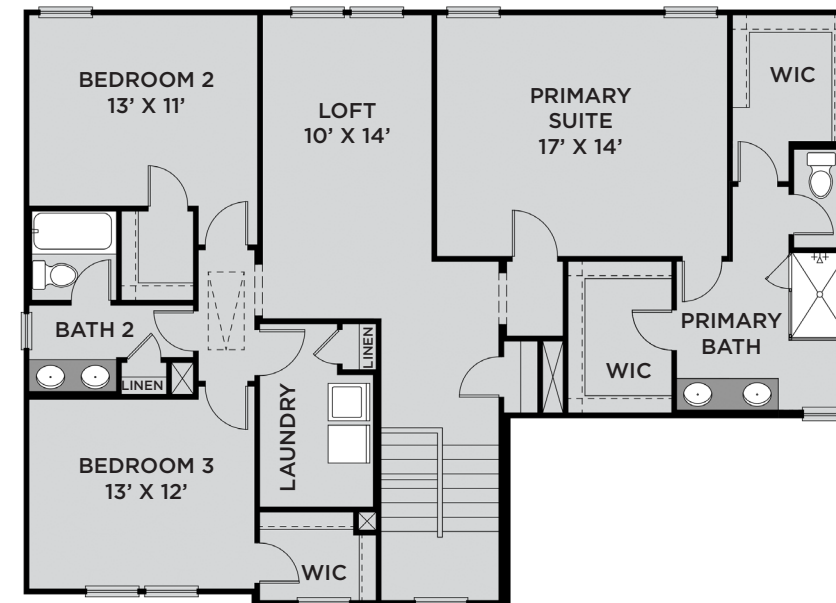
CHARLTON ELEVATION B



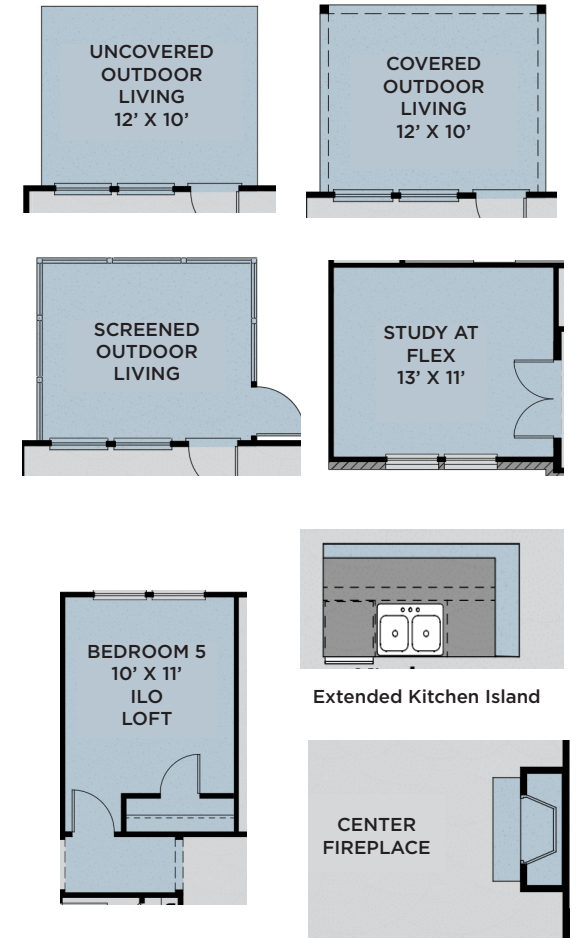
CHARLTON ELEVATION C



FIRST FLOOR



SECOND FLOOR



OPTIONAL THIRD FLOOR BONUS ROOM

Prices, plans, dimensions, features, specifications, materials or availability of homes or communities are subject to change without notice or obligations. Illustrations are artist's depictions only and may differ from completed improvements. Copyright 2024 UnionMain Homes. All Rights Reserved.

MADISON

Plan # 5250

3,188 Base SqFt



5 Bed



3-4 Bath



2 Story



2 Garage

Available Upgrade Options:

Uncovered/Covered/Screened Outdoor Living, French Doors to Outdoor, Additional Family Room Windows, Dining/Study at Flex, Center Fireplace, Extended Kitchen Island, Gourmet Kitchen, Laundry Cabinets, Primary Bathtub, Dual Sink Vanity at Secondary Bath, Additional Bath 4 at Bed 5

About the Madison:

Welcome home to the Madison, a stunning two-story, five-bedroom home with impressive living and entertaining spaces that will be sure to please for years to come. A covered porch opens into a welcoming foyer that provides access to a lovely dining room and a privately set guest suite with its own full bathroom and walk-in closet. The hallway leading out of the foyer opens into a huge open living space, complete with a family room, a breakfast space, and a gourmet kitchen. Behind the kitchen sits a large mudroom with its own walk-in closet for extra storage space before opening into a two-car garage. The second floor features a large, versatile game room, perfect for entertaining or staying in and watching movies. On one side of the game room, you can access a spacious laundry room and also find the beautiful primary suite with a full bathroom and a walk-in closet. On the other side of the game room sit three guest bedrooms. Each bedroom comes with its own walk-in closet and access to a shared full bathroom.



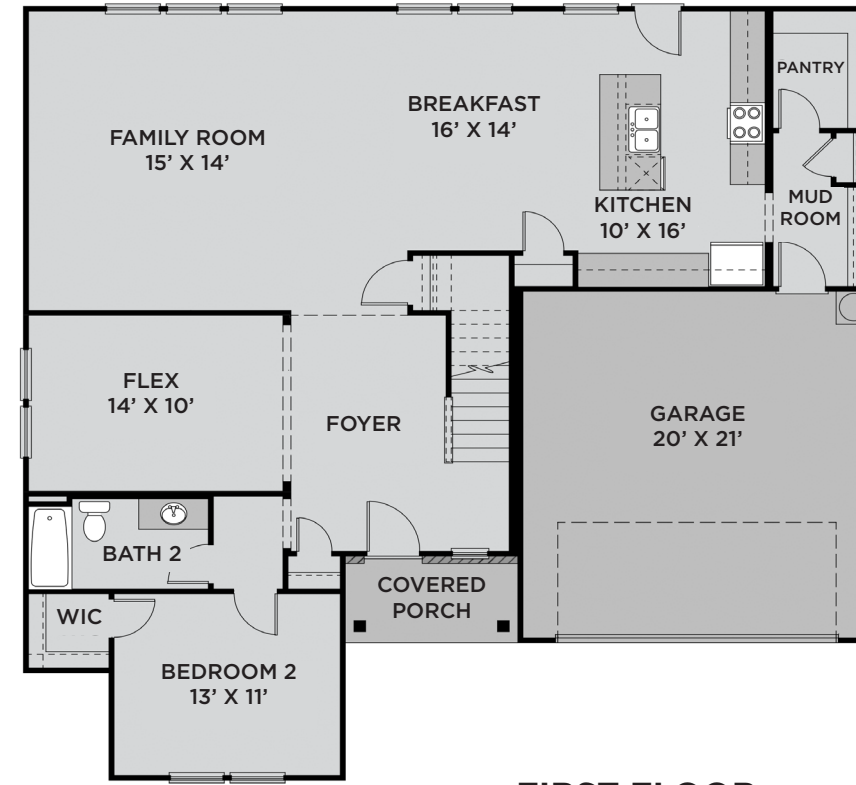
MADISON ELEVATION A



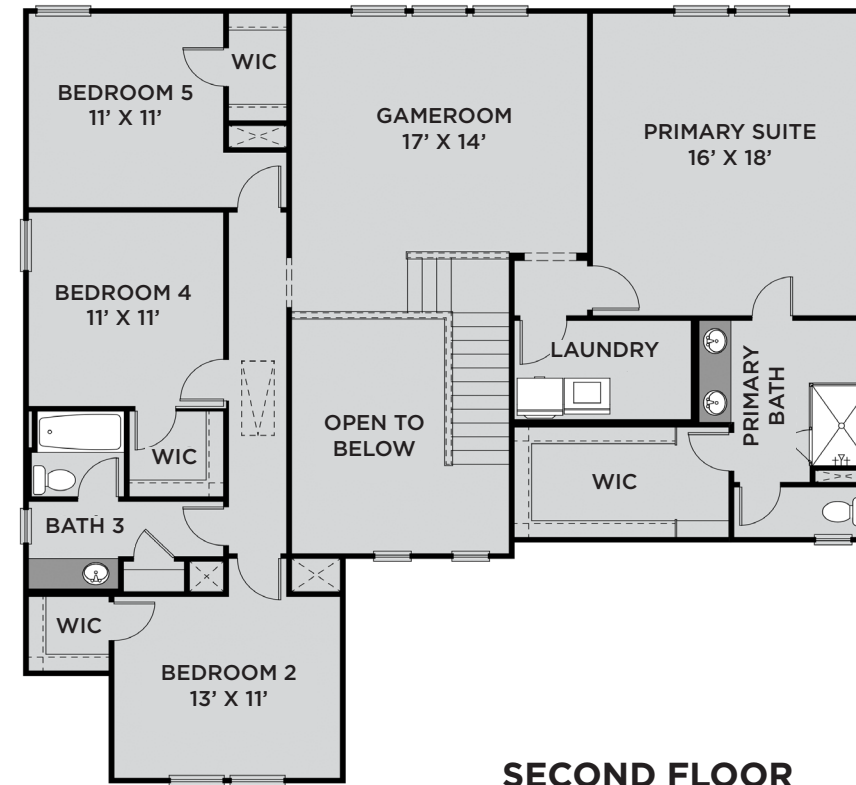
MADISON ELEVATION B



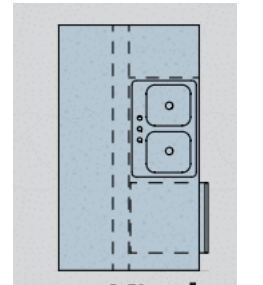
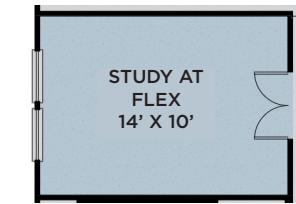
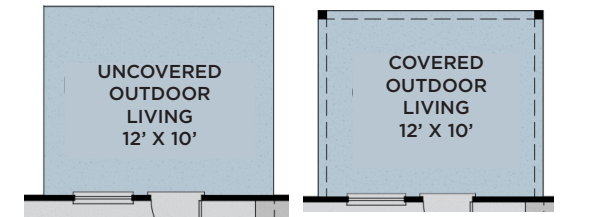
MADISON ELEVATION C



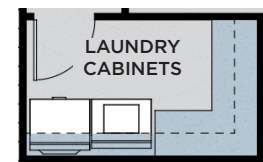
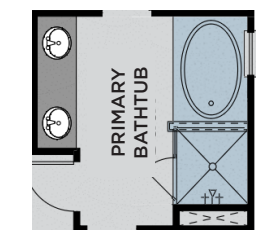
FIRST FLOOR



SECOND FLOOR



Extended Kitchen Island



Additional Full Bathroom 4 at Bedroom 5

Prices, plans, dimensions, features, specifications, materials or availability of homes or communities are subject to change without notice or obligations. Illustrations are artist's depictions only and may differ from completed improvements. Copyright 2024 UnionMain Homes. All Rights Reserved.

WARREN

Plan # 5260

3,266 Base SqFt



5 Bed



3.5-4.5 Bath



2 Story



2 Garage

Available Upgrade Options:

Uncovered/Covered/Screened Outdoor Living, Corner Fireplace, Additional Windows at Family Room/Flex, Extended Kitchen Island, Gourmet Kitchen, Powder Bath Cabinet, Study at Flex, Open Railings, Primary Bathtub, Additional Bath 4 at Bed 5, Sink at Laundry

About the Warren:

The Warren is a terrific two-story open floorplan with plenty of living and entertaining space for hosting family and friends. A welcoming covered porch leads directly into a sizable foyer and a beautiful dining room and also provides easy access to a versatile flex space – perfect for an office, workout space, or playroom. After passing by a conveniently located powder room, is a large family room that offers direct line of sight into a gourmet kitchen with a walk-in pantry and an open breakfast area. A quaint pocket office space can be found just off the breakfast area. A guest bedrooms sits on the first floor behind the kitchen, complete with a full bathroom and a walk-in closet. The two-car garage leads into a mudroom before opening into the kitchen. The open stairs lead to bedrooms two, three, and four, each with its own walk-in closet and access to a shared full bathroom. Upstairs also boasts a multi-functional game room with a full laundry room attached. The private primary suite completes the second floor and features its own full bathroom with double vanities, a separate shower and bathtub and its own spacious walk-in closet.



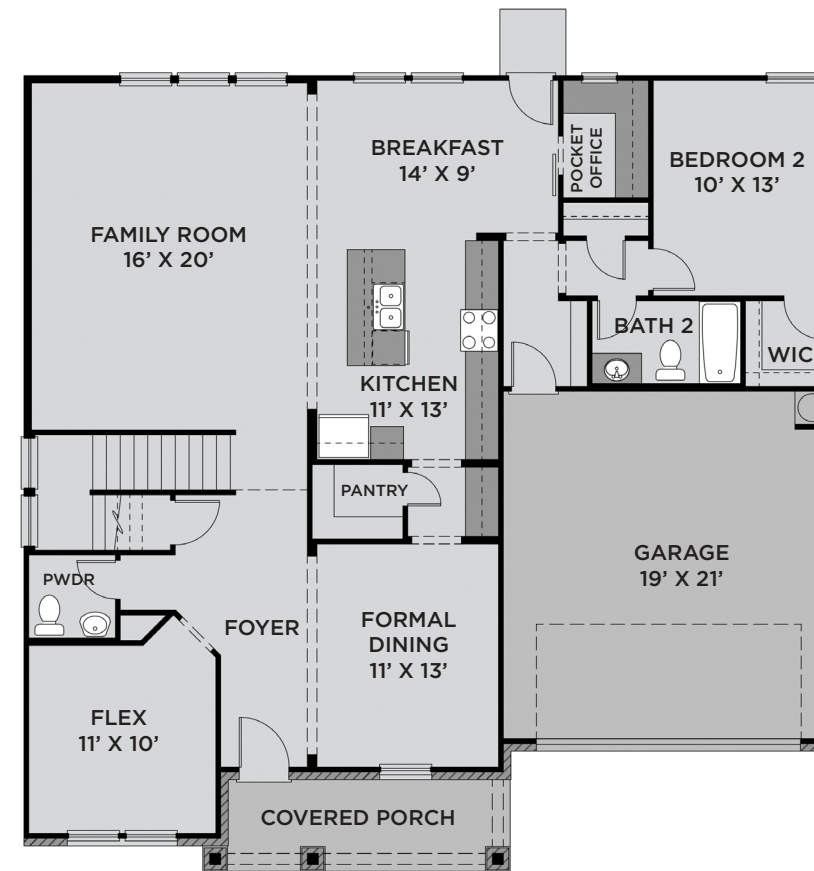
WARREN ELEVATION A



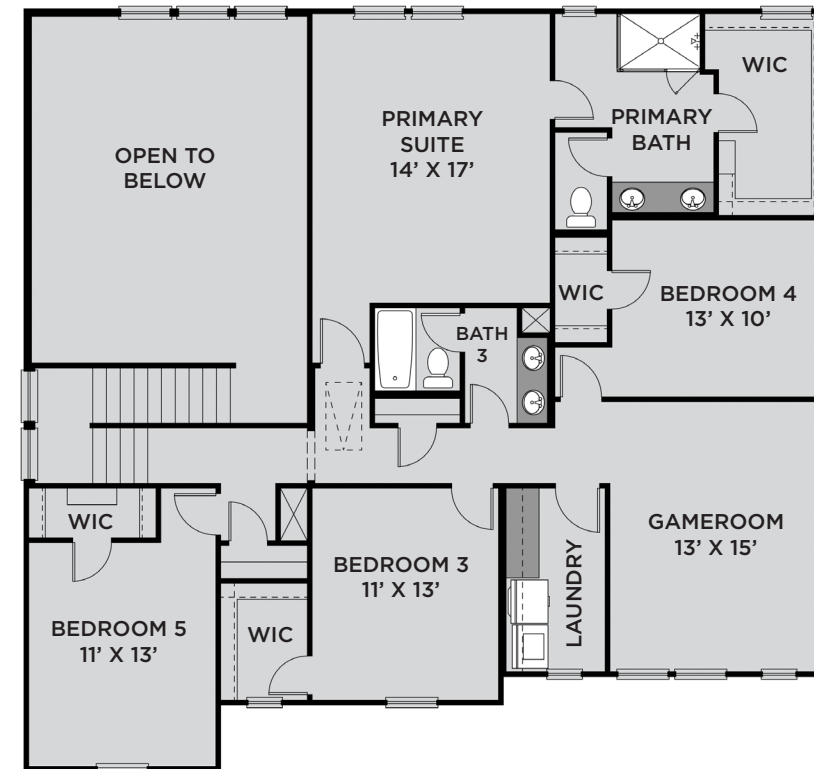
WARREN ELEVATION B



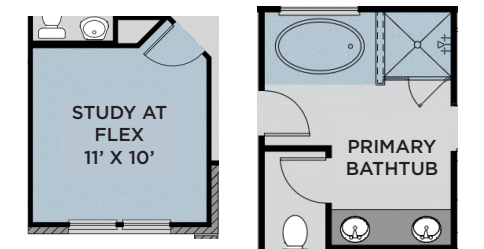
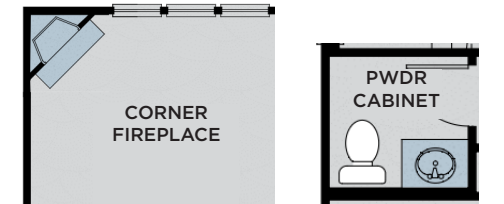
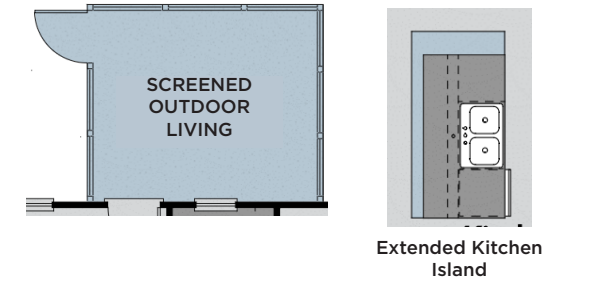
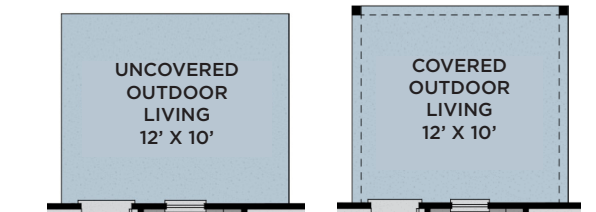
WARREN ELEVATION C



FIRST FLOOR



SECOND FLOOR



Additional Full Bathroom 4 at Bedroom 5

Prices, plans, dimensions, features, specifications, materials or availability of homes or communities are subject to change without notice or obligations. Illustrations are artist's depictions only and may differ from completed improvements. Copyright 2024 UnionMain Homes. All Rights Reserved.

UNIONMAIN HOMES NEW HOMEOWNER'S GUIDE TO SETTING UP UTILITIES



To ensure your move goes as smooth as possible, make sure to set up the necessary utilities in your name after your official closing date. Please monitor and update your utilities start date if your closing date changes. Please note that the new homeowner has three business days after closing to transfer utilities into their name.

COMMUNITY RESOURCES AND LOCAL CONTACTS:



Electricity
City of Commerce
(706) 335-3314
Georgia Power
(888) 660-5890
Jackson EMC (706) 367-5281



Natural Gas
Scana Energy
(877) 467-2262



Internet, Cable & Phone
Truvista
Truvista.net



Security
Phoenix Systems
(678) 566-2640
Phoenixsystems.tv



Trash, Water & Sewer
City of Hoschton
(706) 654-3034



Police Department
Non-emergency
(706) 684-6000



Fire Department
Non-emergency
(706) 654-2500



Emergency
911



City of Hoschton
Cityofhoschton.net

HOA Administrator Company Beacon Management Services
Contact Name Tasha Fulk
Contact Phone 404.907.2112
Contact Email TFulk@beaconmanagementservices.com

\$700 capital contribution at closing. Entrance, common area, pocket park & pond maintenance.



10-YEAR LIMITED STRUCTURAL WARRANTY

WE ARE HERE EVERYDAY FOR YOU

HOW TO SUBMIT A WARRANTY REQUEST?

UnionMain Homes is dedicated to promptly responding to your warranty needs. Per our warranty guide please submit your 60 Day Warranty Service Requests and your 11 Month Warranty Service Requests via our website: www.unionmainhomes.com.

FOR EMERGENCY CLAIMS:

A warranty emergency is an event or situation related to the home's performance that creates an imminent threat of serious damage to the home or results in an unsafe living condition. Emergency service is needed when there is:

- a plumbing leak that requires shutting off the main supply
- a sewer back-up
- a total loss of heating and/or cooling (HVAC) - all units

If you experience a warranty emergency please follow the steps at: www.unionmainhomes.com.

For more information visit www.UnionMainHomes.com

Disclosure:
Warranties are transferable to subsequent owner who takes title within the applicable warranty period. Information above is intended only to highlight certain aspects of the warranty. Terms, conditions, exclusions, and limitations apply. Warranty is based on Performance Standards criteria that are set forth in the full warranty. A complete description of warranty terms, conditions, exclusions, and limitations is available at <http://www.unionmainhomes.com>. 10-year structural warranty covers: footings, bearing walls, beams, girders, trusses, rafters, bearings, columns, lintels, posts, structural fasteners, subfloors, and roof sheathing. The photograph depicts a model containing features or designs that may not be available on all homes. © 2023 UnionMain Homes, LLC. All rights reserved. 04/2024

10 YEAR COVERAGE

on structural elements of the home

2 YEAR COVERAGE

on the workability of plumbing, electrical, HVAC, and other mechanical systems

1 YEAR COVERAGE

on materials and workmanship

Warranty is transferable.

MADDOX LANDING INCLUDED FEATURES



COMMUNITY

- Large Oversized Lots
- Pocket Park Amenity
- Sidewalks on both sides of the street
- 2-Car Garage
- Protective covenants managed by Homeowner's Association
- West Jackson Elementary School
- West Jackson Middle School
- Jackson County High School

EXTERIOR DESIGN FEATURES

- 30-year architectural shingles
- Low maintenance Hardie Cemplank fiber cement siding, trim fascia and soffit
- Exterior water faucets (minimum of 2)
- Weatherproof DFCI exterior outlets (minimum of 2)
- Professionally landscaped front yard with sod on all four sides
- Classic brick/stone/shake/siding accents per elevation
- 12" Roof overhangs (per elevation)
- Seamless gutters and downspouts (per plan)

INTERIOR FINISHES

- 9' First floor and 8' Second Floor Ceilings
- Finished 2-car garage with opener
- 2-panel interior doors with hardware by Kwikset
- Sherwin Williams paint packages
- Smart designed cabinets throughout the home
- Ceiling fans included in family room and primary bedroom
- Ceiling lights in all bedrooms
- Tray Ceilings in primary bedroom
- Delta plumbing fixtures throughout home
- First floor stair railing - half wall
- Interior lighting package by Kichler Lighting
- Ventilated wire shelving in closets and pantry (per plan)
- Laundry room equipped with 110V and 220V washer and dryer outlets
- Crown molding in primary suite and formal rooms



PRIMARY SUITE

- Spacious bedroom with Shaw wall to wall carpet
- Large walk-in shower
- Cultured marble counter tops with rectangular under mount sinks
- Delta faucets
- EVP flooring in Primary Suite
- Elongated water saving toilet

KITCHEN DESIGN FEATURES

- Smart designer cabinets with 42" upper cabinets, 2" crown molding with kitchen islands standard in all plans
- Granite counter top with tile back splash
- EVP flooring
- Whirlpool stainless steel appliances to include: dishwasher, gas range, and over the range microwave
- Delta single handle faucet
- Direct venting of microwave hood to exterior of home
- 1/3 Horsepower sink-mounted garbage disposal

SECONDARY BEDROOMS AND BATHS

- Spacious bedroom with Shaw wall to wall carpet
- Cultured marble counter tops with integrated rectangular marble sink
- Sterling brand white tub/shower combination
- EVP flooring in bathrooms
- Elongated water saving toilet

SAFETY FEATURES

- Integrated smoke detector provided at each floor and bedroom
- Carbon Monoxide detector (per floor)
- Passive Radon gas venting in each house
- Kwikset front door handle set with Kwikset Smart door lock
- Exterior pest prevention

CONNECTED WITH CARE - SMART HOME

- OnQ System Panel. Choose up to six total voices or data lines in your choice of location
- InTouch video doorbell
- Kwikset Smart Door lock
- Programmable Thermostat

CUSTOMER CARE

- As a customer of UnionMain Homes, you will receive:
 - Weekly follow-up communication from your sale counselor and builder
 - Pre-Construction Orientation with site walk and options review
 - Pre-Drywall framing inspection walk
 - Quality Control Completion Inspection by UnionMain Homes management prior to closing
 - Pre-Closing walk-through
 - Courtesy follow-up after closing (60-90 days after closing)
- 10-Year transferable Owner Warranty from Bonded Builder Warranty

ENERGY FEATURES

- Each home energy tested with certified HERS rating
- Low-E Single hung windows
- High efficiency 50-gallon gas hot water heater with circulating pump
- Carrier gas heating with energy efficient furnace
- Dual damper electronic balancing system (per plan)
- Two Honeywell thermostats. Programmable thermostat located on main level
- Energy Saving R-13 batt insulation in exterior walls, R-30 blown insulation in ceilings and R-19 garage ceiling where conditioned space is located on second floor
- Exterior house wrap that eliminates air leaks, provides insulation value, and makes home healthy and comfortable



EST.  2022

MADDOX LANDING





COMMUNITY SALES CENTER

Maddox Landing

48 Hickory Grove Lane

Hoshton, GA 30548

Monday thru Saturday (10AM-6PM)

Sunday (12 PM-6PM)

(470)-287-7850



Learn More About
Maddox Landing